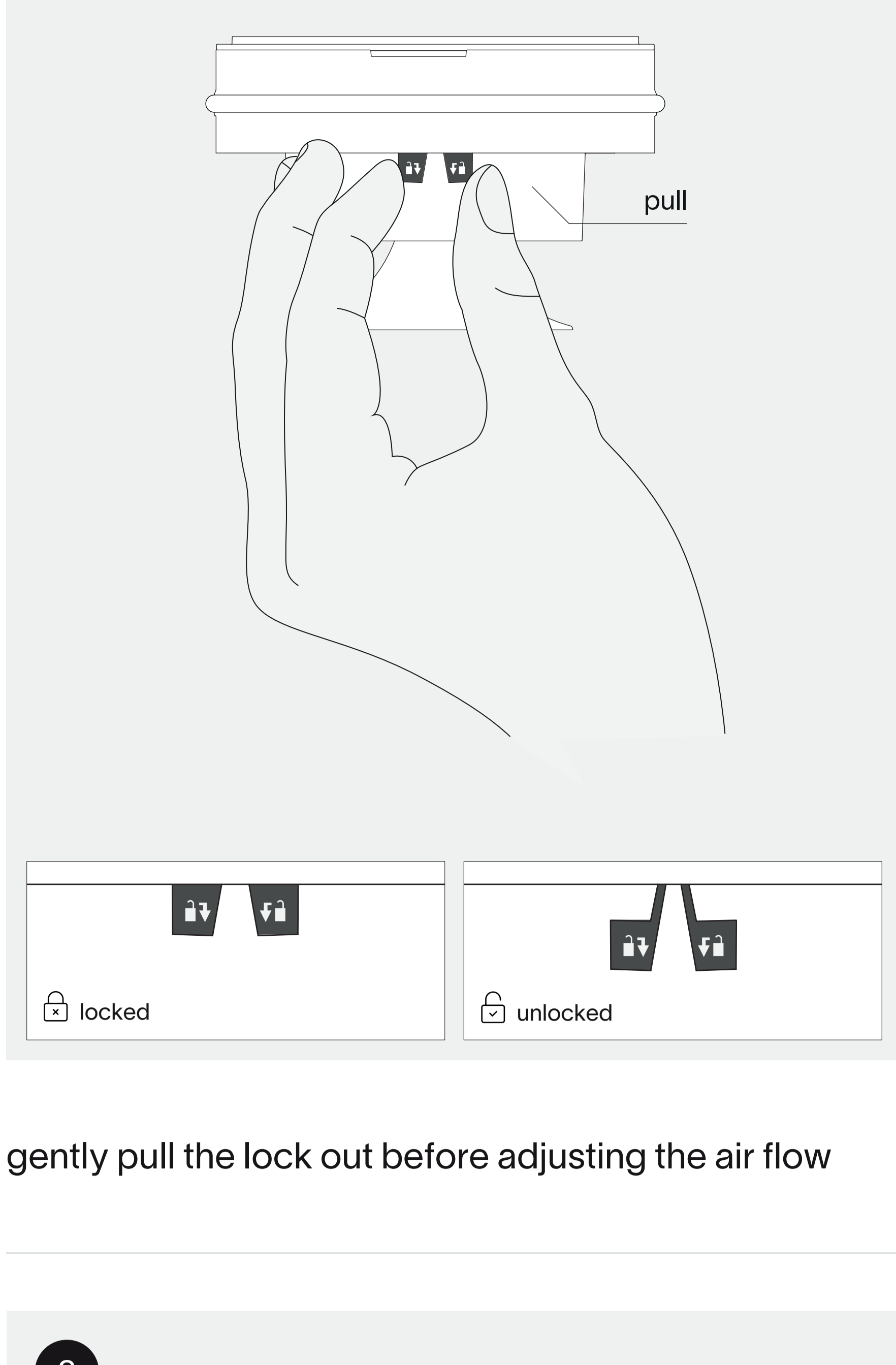
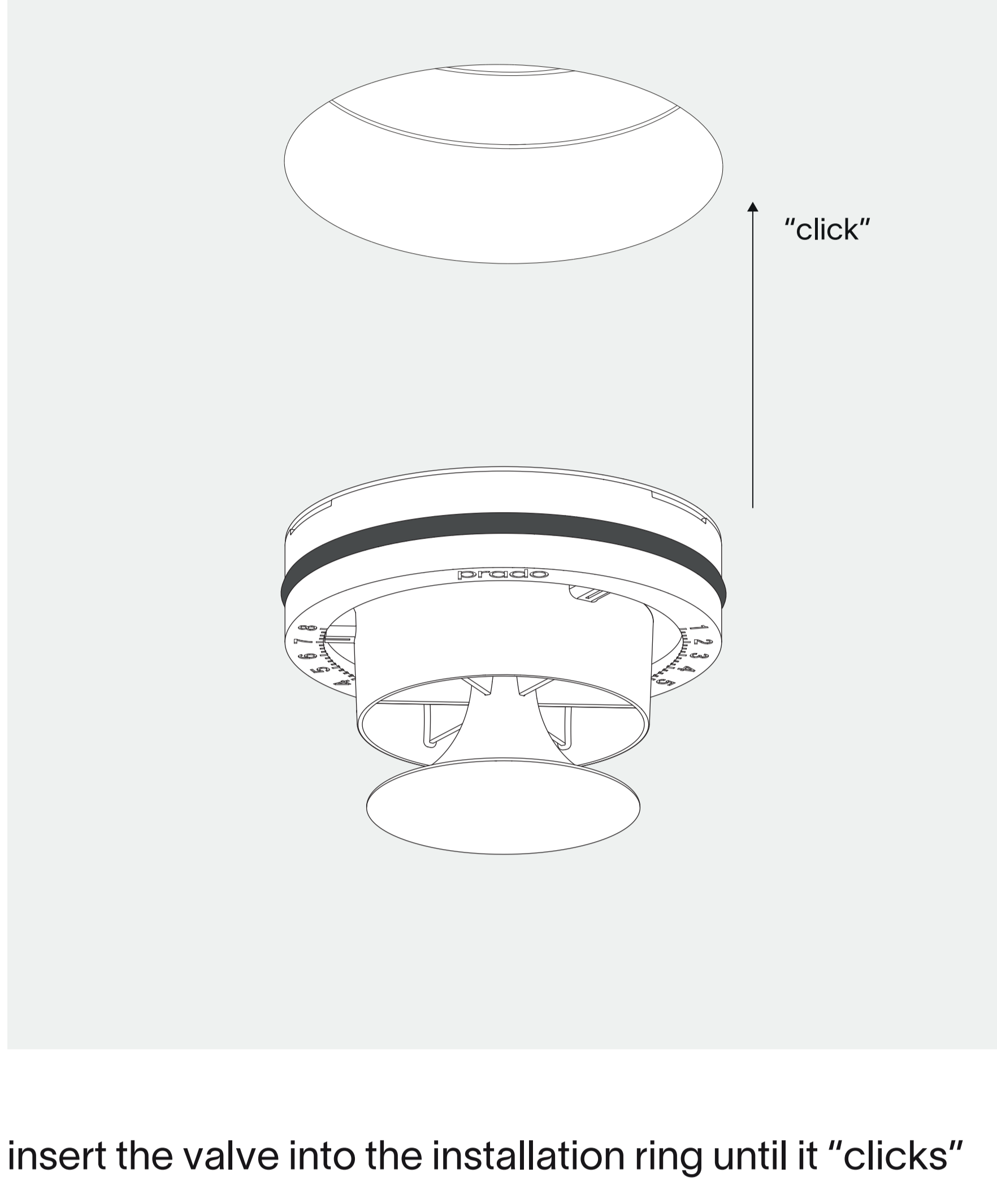


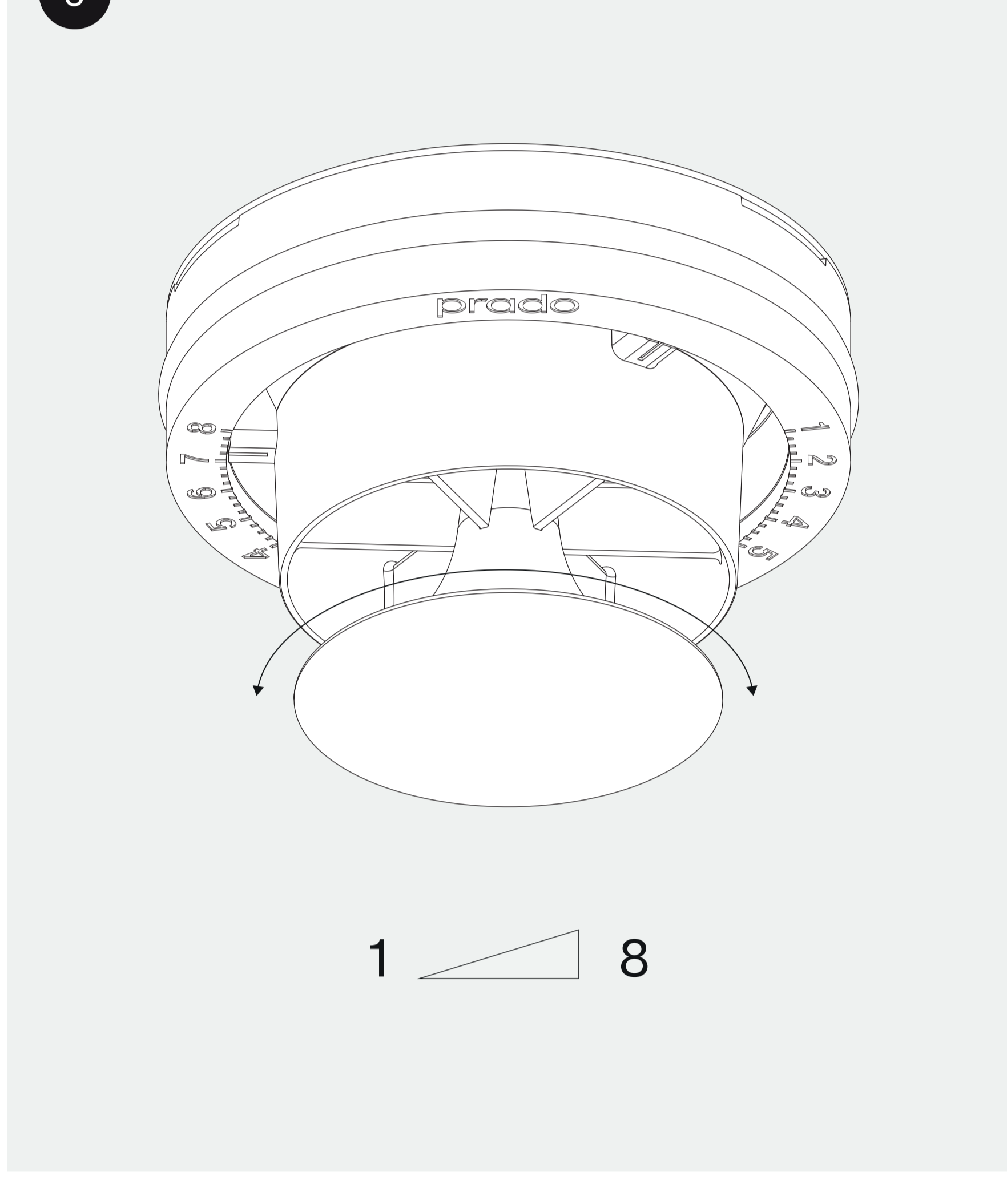
pradovent Ø108 installation instruction



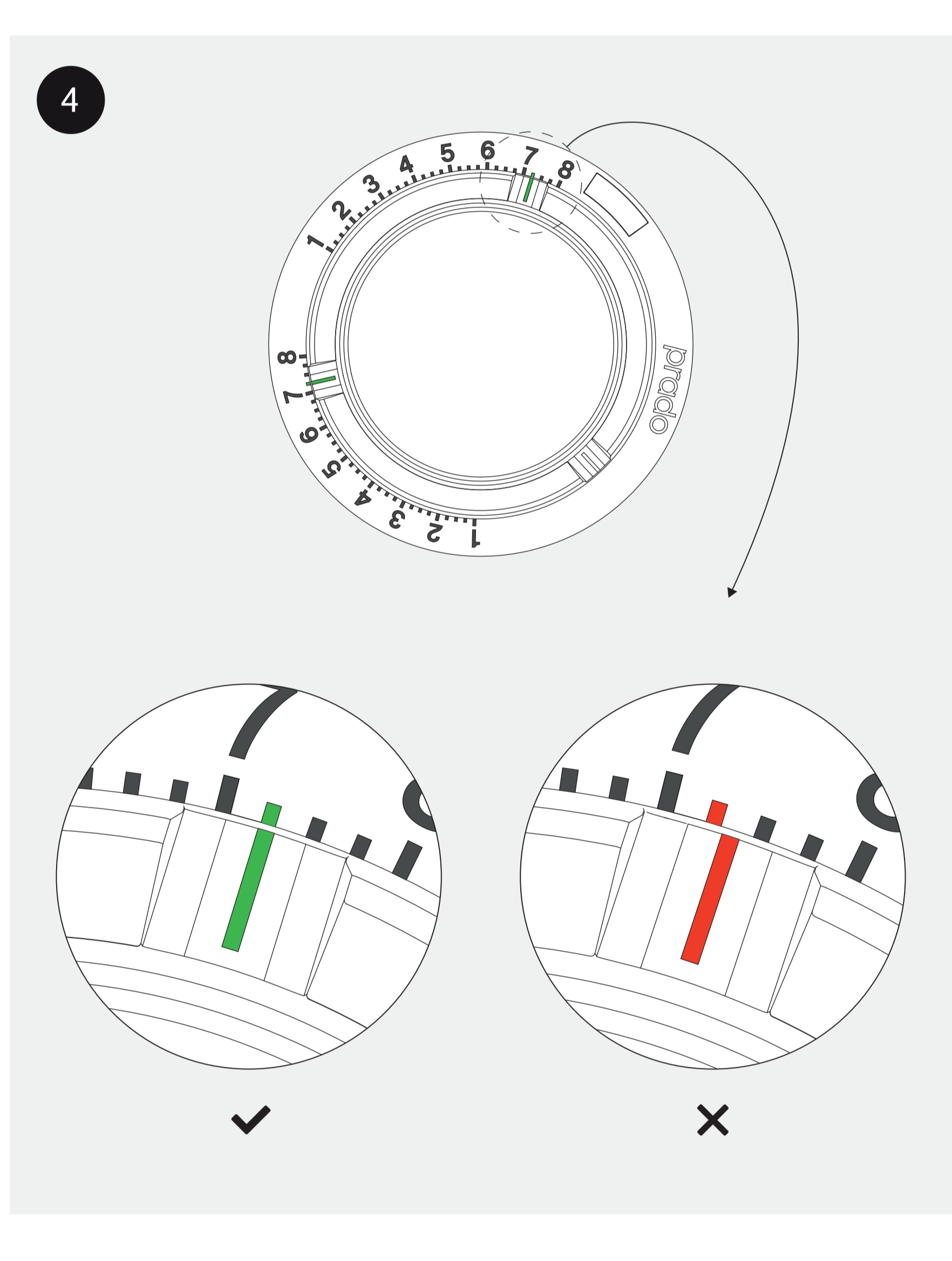
gently pull the lock out before adjusting the air flow



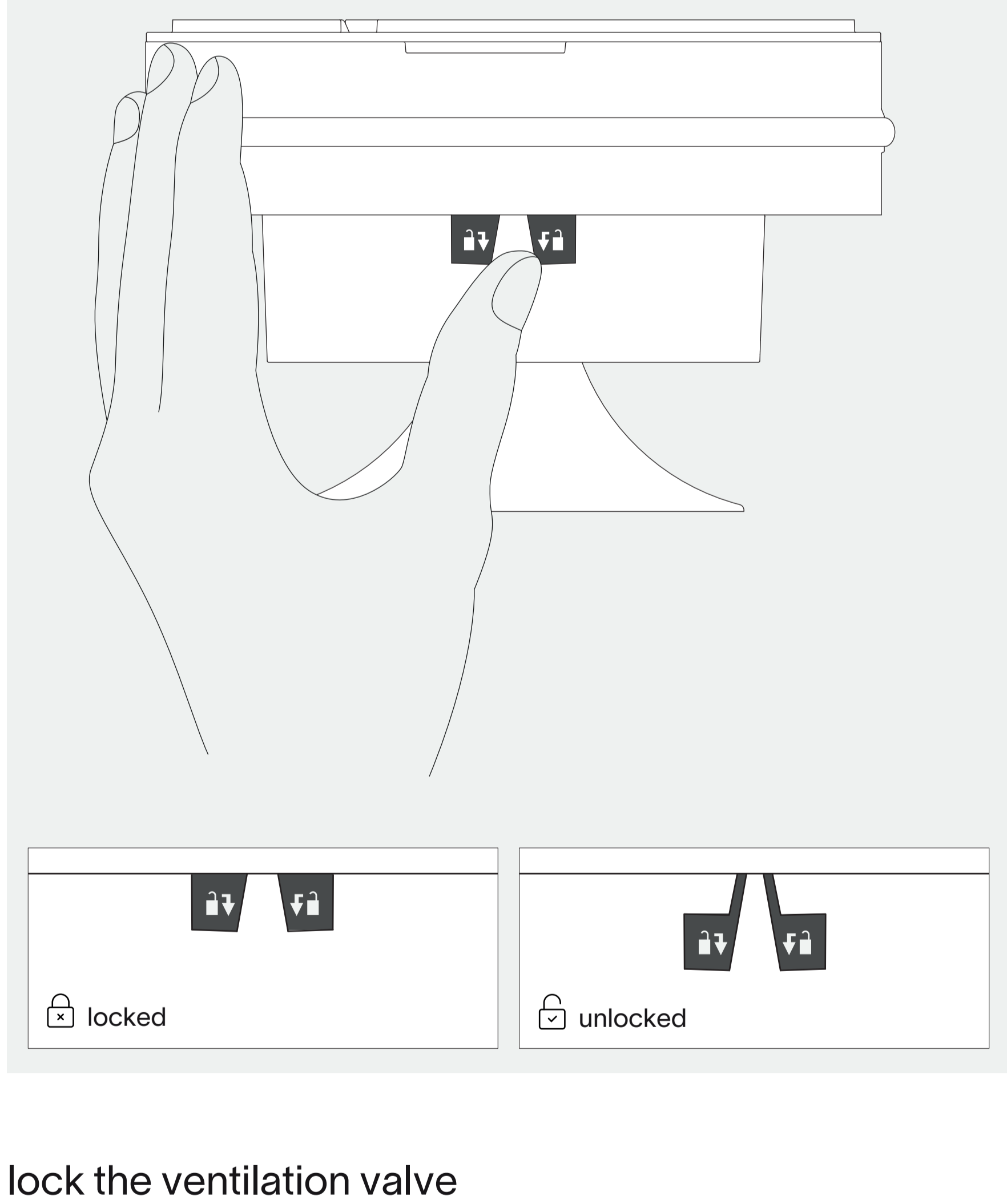
insert the valve into the installation ring until it "clicks"



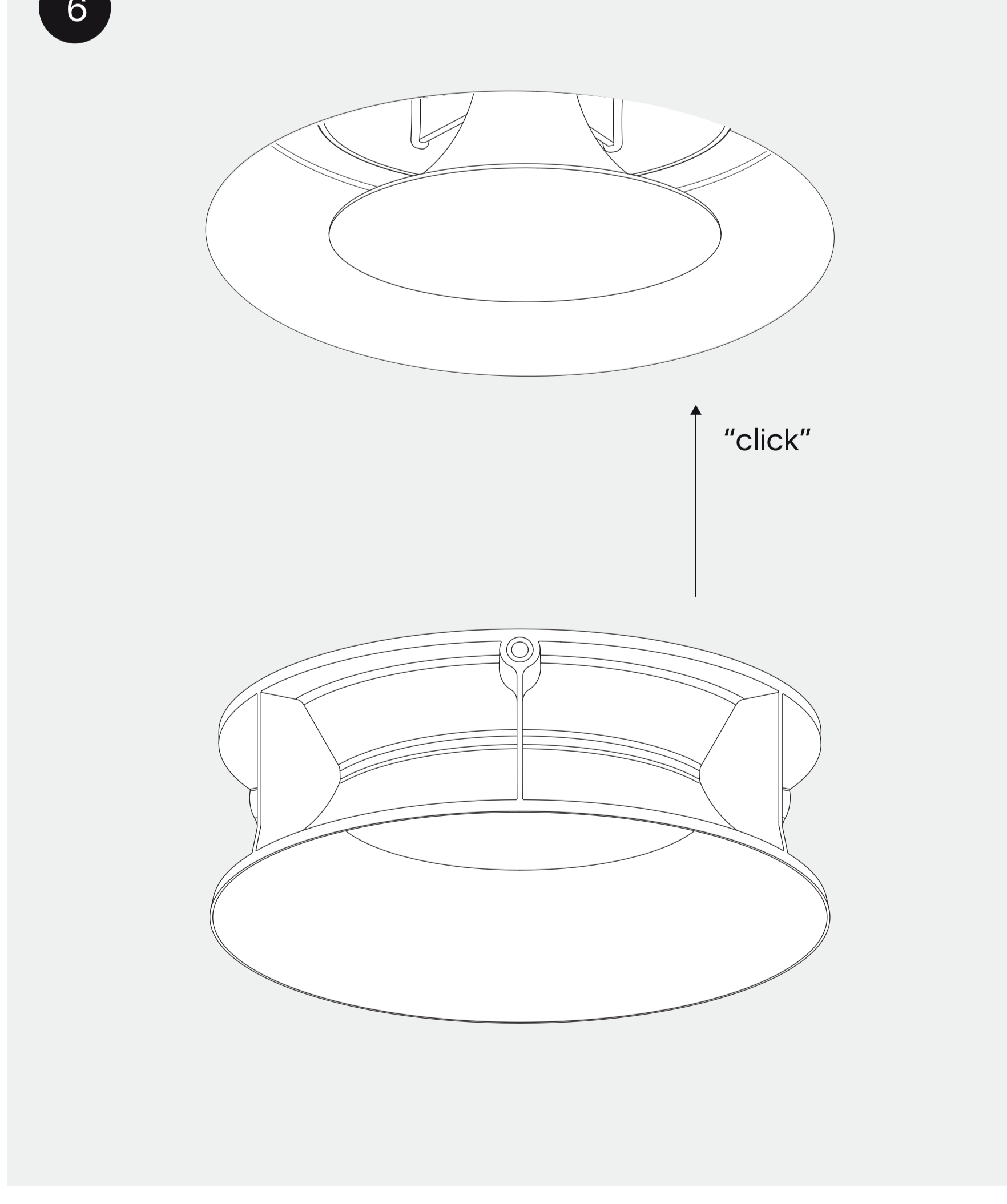
twist the luminaire to adjust the ventilation flow level



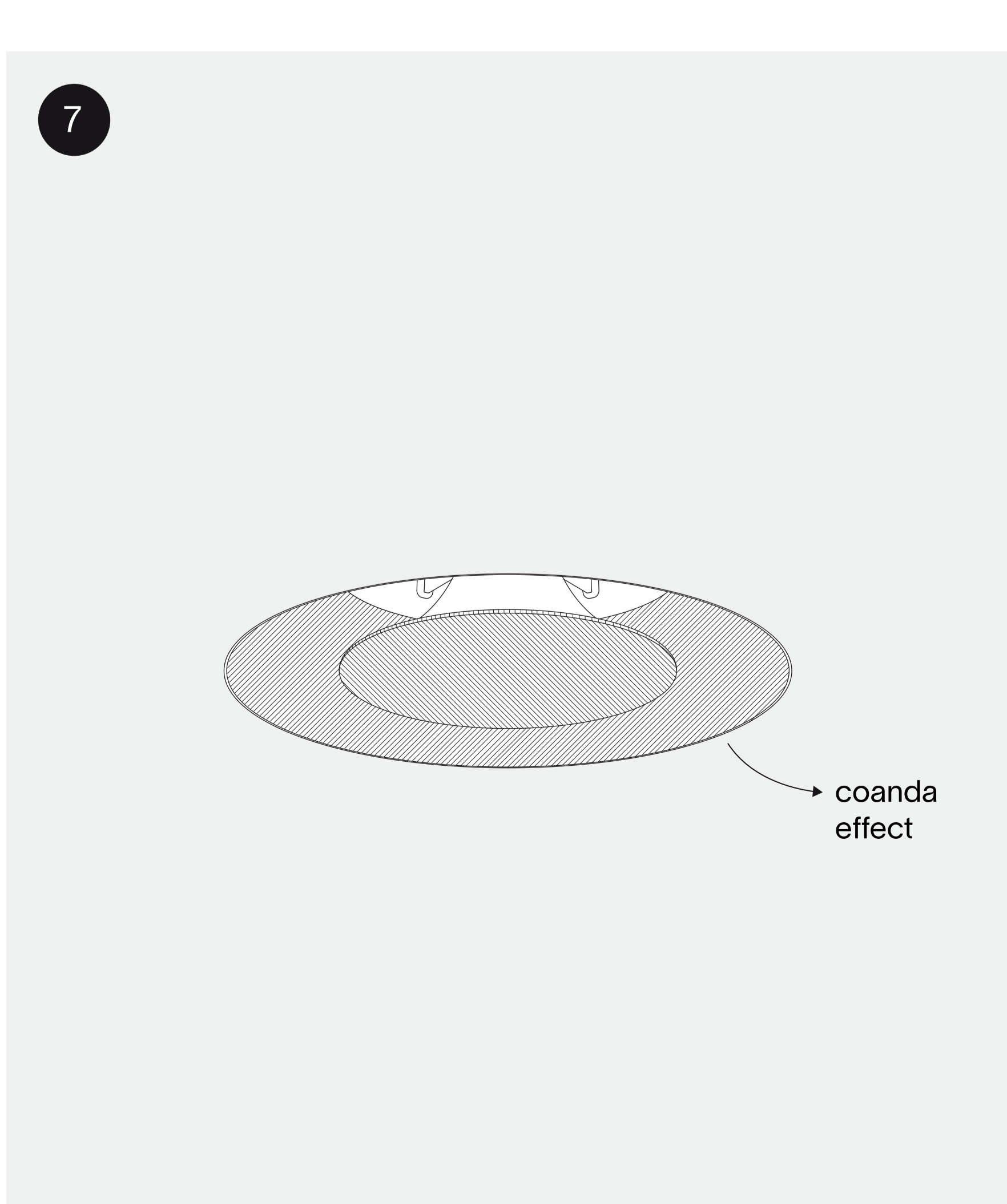
Make sure that the lines are aligned and that the valve is not in a position in between 2 different steps before locking the ventilation valve. if it isn't clearly visible, remove the valve from the plaster ring for locking.



lock the ventilation valve



insert the design ring



Maintenance: clean and replace the filters of your ventilation system regularly to keep your ceiling clean. thank you for choosing prado